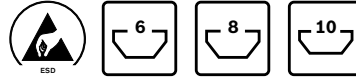
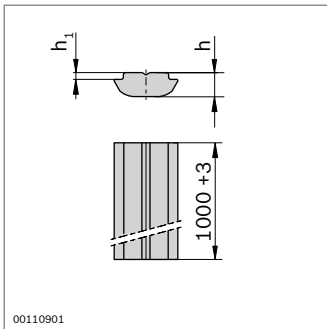


### Sliding block, swivel-in sliding block profile, swivel-in spring



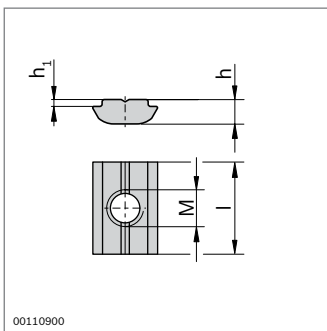
- ▶ Swivel-in sliding block profile for self-assembly of individual fastening elements
- ▶ The swivel-in sliding block for inserting directly at the installation position for really easy assembly
- ▶ The swivel-in sliding block with spring can be inserted directly at the assembly point and fixed in position thanks to attached springs
- ▶ The swivel-in sliding block with headless setscrews permits shake-proof fixing in all positions
- ▶ Profile finishing: not required

Technical data (p. 19-5)



Slot	
8 (M8)	2 200 N
10 (M8)	8 000 ... 18 000 N <sup>1)</sup>

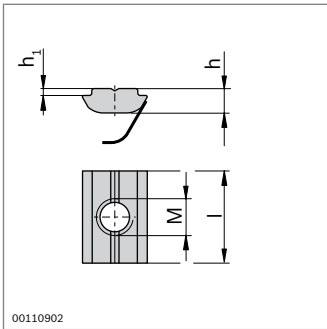
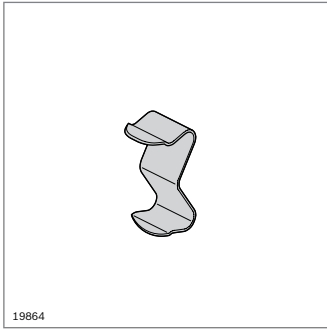
<sup>1)</sup> Depending on profile (p. 19-5)

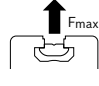


Swivel-in sliding block profile	Slot	h (mm)	h <sub>1</sub> (mm)	l (mm)	No.
steel; galvanized	8	4.8	1.0	1000	<b>3 842 529 327</b>
	10	5.3	1.5	1000	<b>3 842 529 325</b>

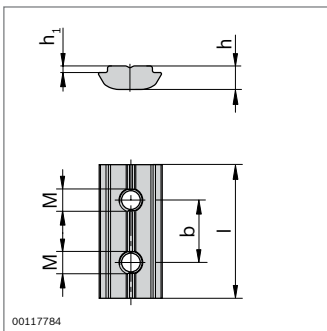
Sliding block, swivel-in	Slot	M	h (mm)	h <sub>1</sub> (mm)	l (mm)	ESD	No.
steel; galvanized	8	M5	4.8	1.0	16		100 <b>3 842 529 319</b>
		M6	4.8	1.0	16		100 <b>3 842 529 320</b>
		M8	4.8	1.0	16		100 <b>3 842 529 321</b>
	10	M6	5.3	1.5	20		100 <b>3 842 529 323</b>
		M8	5.3	1.5	20		100 <b>3 842 529 324</b>
steel, stainless	6	M3	3.0	0.9	12		100 <b>3 842 547 826</b>
		M4	3.0	0.9	12		100 <b>3 842 536 669</b>
		M5	3.0	0.9	12		100 <b>3 842 547 825</b>
	8	M6	4.8	1.0	16		100 <b>3 842 530 321</b>
		M8	5.3	1.5	20		100 <b>3 842 530 316</b>

Accessories: spring (p. 3-9)





















Slot	
8 (M8)	2 200 N
10 (M8)	8 000 ... 18 000 N <sup>1)</sup>

<sup>1)</sup> Depending on profile (p. 19-5)




► The spring assists with the assembly and positioning of the sliding block and swivel-in sliding block

Spring	Slot		No.
Spring steel, stainless	6	100	<b>3 842 523 145</b>
	8	100	<b>3 842 516 685</b>
	10	100	<b>3 842 516 669</b>

Swivel-in sliding block with spring	Slot	M	h (mm)	h <sub>1</sub> (mm)	l (mm)	ESD 		No.
steel; galvanized	8	M4	4.8	1.0	16		100	<b>3 842 529 294</b>
		M5	4.8	1.0	16		100	<b>3 842 529 295</b>
		M6	4.8	1.0	16		100	<b>3 842 529 296</b>
		M8	4.8	1.0	16		100	<b>3 842 529 297</b>
	10	M4	5.3	1.5	20		100	<b>3 842 541 393</b>
		M5	5.3	1.5	20		100	<b>3 842 529 298</b>
		M6	5.3	1.5	20		100	<b>3 842 529 299</b>
		M8	5.3	1.5	20		100	<b>3 842 529 300</b>
steel, stainless	8	M4	4.8	1.0	16		100	<b>3 842 547 824</b>
		M5	4.8	1.0	16		100	<b>3 842 547 823</b>
		M6	4.8	1.0	16		100	<b>3 842 547 822</b>
		M8	4.8	1.0	16		100	<b>3 842 547 821</b>
	10	M5	5.3	1.5	20		100	<b>3 842 547 808</b>
		M6	5.3	1.5	20		100	<b>3 842 547 807</b>
		M8	5.3	1.5	20		100	<b>3 842 547 806</b>

Material: Spring: Spring steel, stainless

Sliding block, swivel-in, with headless setscrew	Slot	M	b (mm)	h (mm)	h <sub>1</sub> (mm)	l (mm)		No.
steel; galvanized	8	M5	12	4.8	1.0	24	100	<b>3 842 536 675</b>
	10	M5	14	5.3	1.5	30	100	<b>3 842 536 676</b>
steel, stainless	6	M4	8	3.0	0.9	15	100	<b>3 842 536 673</b>